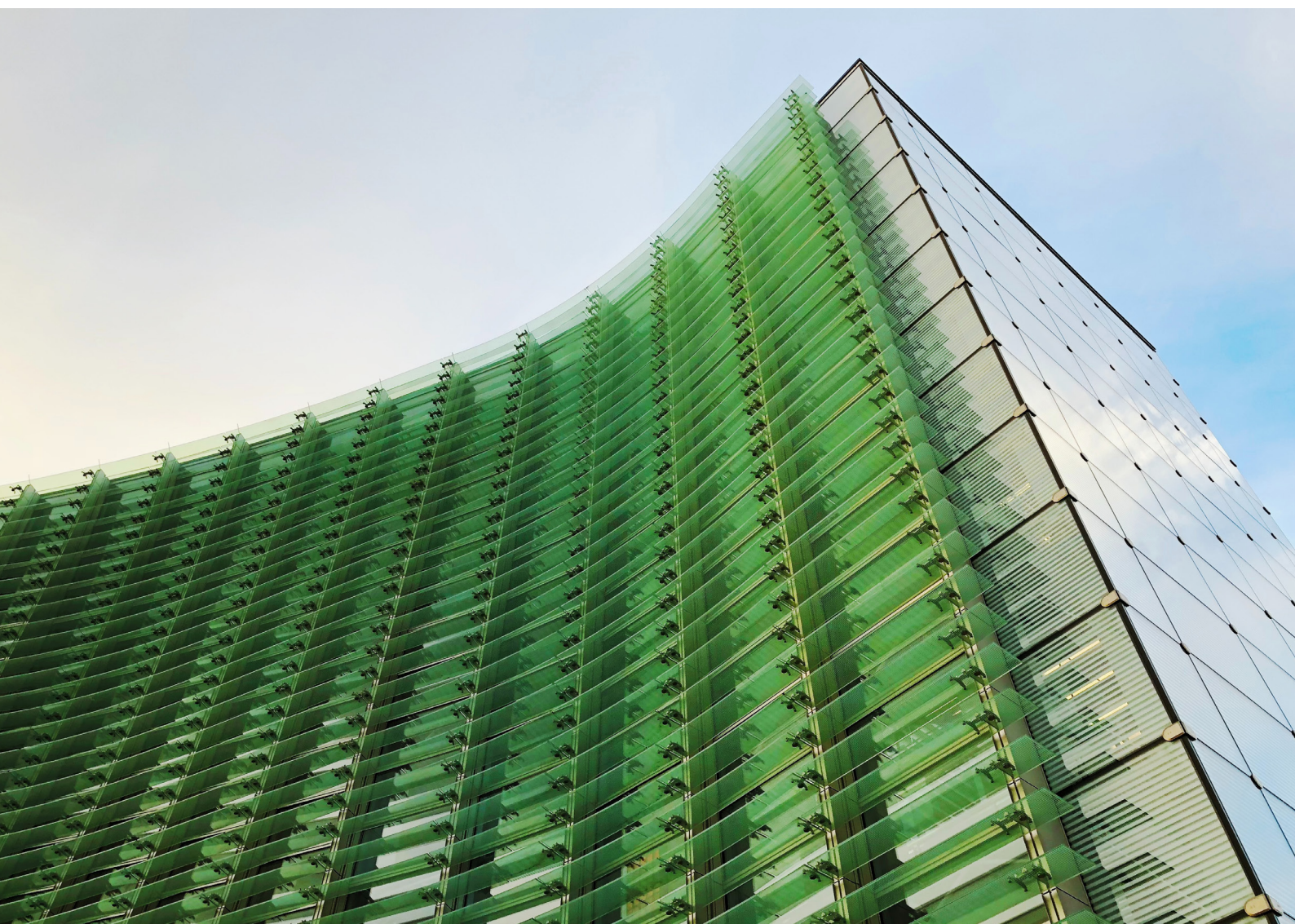




Costs and Charges Disclosure



Waystone Financial Investments Limited ("WFIL") is obliged by the revised Markets in Financial Instruments Directive ("MiFID II") and implemented in the UK by the Financial Conduct Authority to provide its clients with all appropriate information on the costs of its services and of the products available within the Prudential ISA.

The Prudential ISA is available online for new applications and the management of existing investments.

Online application and account management does not affect ISA eligibility requirements, execution policy or your cancellation rights.

If you have a financial adviser, they are able to buy and sell investments and amend your personal details online on your behalf. (Advice is required for new investments within the Prudential ISA.) The Prudential ISA terms and conditions have therefore been amended to provide your consent for your adviser to buy and sell and to make amendments online on your behalf, and to incorporate requirements particular to online activity (including those relating to personal data and data security). However, the Prudential ISA terms and conditions are otherwise unchanged and apply equally to online and other activity.

Registration is required for access to online services. Once registered for online access, you will be notified of any action taken on your account by you or your adviser on your behalf.

For more information, contact us on 0344 335 8936.

WFIL is therefore placing a "Prudential ISA costs and charges document" on this site for each share class in the WS Prudential Investment Funds (1) open-ended investment company, together with an explanation (below) to assist in understanding what is contained.

Article 24(4) of the revised Markets in Financial Instruments Directive ("MiFID II") requires firms to provide clients with "appropriate information in good time" about "all costs and related charges". This has been reflected by the FCA in its Conduct of Business Rules (COBS 2.2A.2 R (1)(d)). The "Prudential ISA costs and charges disclosure" documents are the means by which Waystone Financial Investments Limited ("WFIL") satisfies the above obligation.

MiFID II also requires that the costs of investment products or services is presented in aggregated form. This is to ensure that clients are able to readily understand the impact on their investments of the total costs charged. However, clients can also request a breakdown of those costs so that individual components can also be understood.

To save the need for client requests, WFIL has decided to show both aggregated costs and the more detailed breakdown in its disclosure materials. The purpose of this material is to provide clients with an explanation of the various product costs shown. WFIL has no "service costs" as it does not charge its clients for operating their Prudential ISA accounts. Rather, it receives fees from Prudential Distribution Limited through a commercial agreement with them for acting as ISA plan manager. Such fees are based on the value of client's assets within the Prudential ISA.

(It should be noted that, to allow comparability with other products and services available to investors, WFIL's approach has been to show all cost categories, whether relevant to an individual product or not. In certain cases therefore, the disclosures will be £0 for some cost categories.)

The cost types shown are as follows:

Cost type	Description
One-off costs	A payment on investment or divestment either made directly by the investor or paid by deduction from the investor's subscription or the redemption proceeds due. "Initial charges" or "exit charges" would be examples of "one-off" costs.
Ongoing costs	Ongoing (sometimes referred to as "recurring") costs are payments taken from a product (either directly, or via encashment of investors' holdings) to fund the operation of that product. Examples include costs such as management charges, legal, professional and accounting expenses, depositary or custodian fees.
Transactional costs	Transactional costs are incurred when a fund or other product into which investors have subscribed buys or sells underlying investments, e.g shares or bonds. The transactional costs represent the average charge over prescribed periods and include both the costs necessarily incurred (such as brokers' fees, exchange costs, stamp duty and other taxes), and an assessment of the cost of entering or exiting the market (in simple terms the difference between the price of the instrument at the time the order was placed and the actual price at which it was executed).
Incidental costs	Where products utilise "performance fees" (i.e. charges only payable in certain circumstances), then these should be shown separately against this heading.